

DBBW: Federal Documentation and Consultation Centre on Wolves

Claudia A. Szentiks, Guido Fritsch

**Leibniz Institute for Zoo and Wildlife Research (IZW)
Berlin, Germany**

— INTRODUCTION

DBBW

Dokumentations- und
Beratungsstelle des Bundes
zum Thema Wolf

- ❖ Since returning in 1996 and reproduction start in 2000 - population grown steadily
- ❖ Since 2016 DBBW was invented (online since 2019)



DBBW, die Dokumentations- und Beratungsstelle des Bundes zum Thema Wolf

Zu unseren Aufgaben gehört es, die Behörden von Bund und Ländern bei Fragen zu wildlebenden Wölfen zu beraten und die in den Bundesländern erhobenen Daten zum Wolfsvorkommen bundesweit zusammenzufassen und in aufbereiteter Form der Öffentlichkeit zur Verfügung zu stellen. Die DBBW stellt die hier dargestellten Informationen im Auftrag des Bundesamts für Naturschutz mit Mitteln des BMUB zu-

— TASK

- ❖ Since returning in 1996 and reproduction start in 2000 - population grown steadily
- ❖ Since 2016 DBBW was invented (online since 2019)
 - ❖ Give advice to the national and federal conservation authorities concerning wild wolves
 - ❖ Evaluation of particular hints of wolf presence
 - ❖ Guidance on actions to be taken when wolves show untypical behaviour
 - ❖ Collection of Monitoring Data from all federal states
 - ❖ Presentation of data to the public

TASK

DBBW

Dokumentations- und
Beratungsstelle des Bundes
zum Thema Wolf

- ❖ Since returning in 1996 and reproduction start in 2000 - population grown steadily
- ❖ Since 2016 DBBW was invented (online since 2019)
- ❖ Partners



Federal Ministry
for the Environment, Nature Conservation
and Nuclear Safety



SENCKENBERG
world of biodiversity



Leibniz-Institut für Zoo-
und Wildtierforschung
IM FORSCHUNGSVERBUND BERLIN E.V.

TASK

- ❖ Since returning in 1996 and reproduction start in 2000 - population grown steadily
- ❖ Since 2016 DBBW was invented (online since 2019)
- ❖ Partners



- ❖ Finance and supervise the research and development scheme:
 - “Documentation of wolf occurrences and wolf management in Germany and counselling of federal and state authorities”
- ❖ Advice to the federal government and federal state authorities on the wolf

TASK

DBBW

Dokumentations- und
Beratungsstelle des Bundes
zum Thema Wolf

- ❖ Since returning in 1996 and reproduction start in 2000 - population grown steadily
- ❖ Since 2016 DBBW was invented (online since 2019)
- ❖ Partners

SENCKENBERG
world of biodiversity

- ❖ Management and coordination of the partners
- ❖ Research into the feeding habits of wolves based on faecal analyses and the examination of prey remains
- ❖ Age determination of wolves based on skull features.
- ❖ Genetic studies on wolves and lynx in Germany

TASK

DBBW

Dokumentations- und
Beratungsstelle des Bundes
zum Thema Wolf

- ❖ Since returning in 1996 and reproduction start in 2000 - population grown steadily
- ❖ Since 2016 DBBW was invented (online since 2019)
- ❖ Partners



- ❖ Coordinates wolf monitoring and research in Saxony
- ❖ Provides expert advice for other federal states
- ❖ Works in monitoring / supports management
- ❖ Various projects on behalf of the federal government
- ❖ Compilation of the results

TASK

- ❖ Since returning in 1996 and reproduction start in 2000 - population grown steadily
- ❖ Since 2016 DBBW was invented (online since 2019)
- ❖ Partners



Leibniz-Institut für Zoo-
und Wildtierforschung

IM FORSCHUNGSVERBUND BERLIN E.V.

- ❖ Post mortem research in all wolves found dead in Germany
- ❖ Examines cause of death and possible previous diseases
- ❖ Age determination of wolves based on computed tomography data

— RESULTS DBBW

DBBW

Dokumentations- und
Beratungsstelle des Bundes
zum Thema Wolf

- ❖ Population growing
- ❖ 130 packs / 38 pairs / 9 single territories in 2019/2020

[<https://www.dbb-wolf.de/Wolfsvorkommen/territorien/karte-der-territorien>]

Wolfsterritorien - 2019/20

130 Rudel, 38 Paare, 9 territoriale Einzeltiere. In 117 Rudeln wurde Reproduktion nachgewiesen, insgesamt wurden 438 Welpen bestätigt (14 Rudel überschreiten Bundeslandgrenzen). Die territorialen Wölfe kamen in folgenden Bundesländern vor: Baden-Württemberg, Bayern, Brandenburg, Hessen, Mecklenburg-Vorpommern, Niedersachsen, Nordrhein-Westfalen, Rheinland-Pfalz, Sachsen, Sachsen-Anhalt, Schleswig-Holstein, Thüringen.

2019/20

Neustart

00	= Wolfsjahr 2000 / 2001				
01	02	03	04	05	06
07	08	09	10	11	12
13	14	15	16	17	18
19	20	21			

Alle Bundesl v Alle Territo v

Animation

1000


● Rudel
 ● Paar
 ● Einzeltier

<https://www.dbb-wolf.de/>

 © DBBW 2021-11-09
 Kenntnisstand: 2021-11-04

RESULTS DBBW

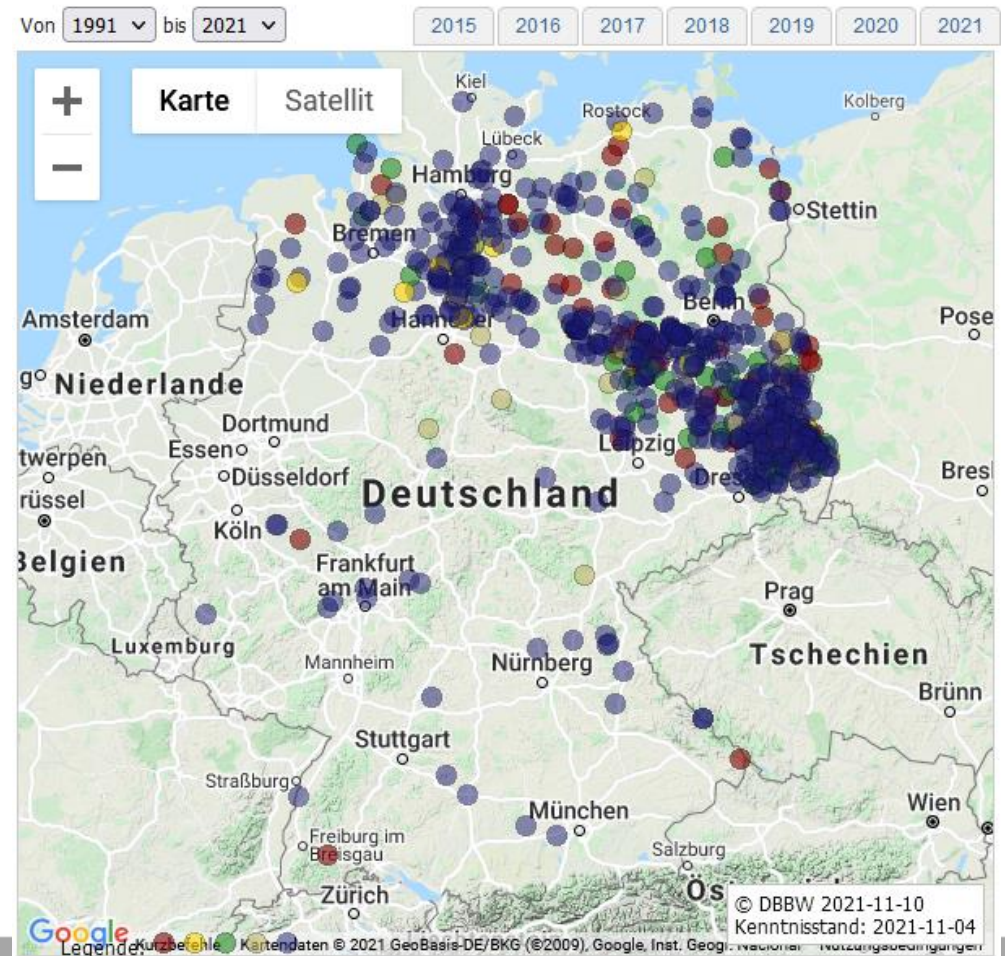
DBBW

Dokumentations- und
Beratungsstelle des Bundes
zum Thema Wolf

- ❖ Population growing
- ❖ 130 packs / 38 pairs / 9 single territories in 2019/2020

[<https://www.dbb-wolf.de/Wolfsvorkommen/territorien/karte-der-territorien>]

- ❖ Amount of dead wolves is rising



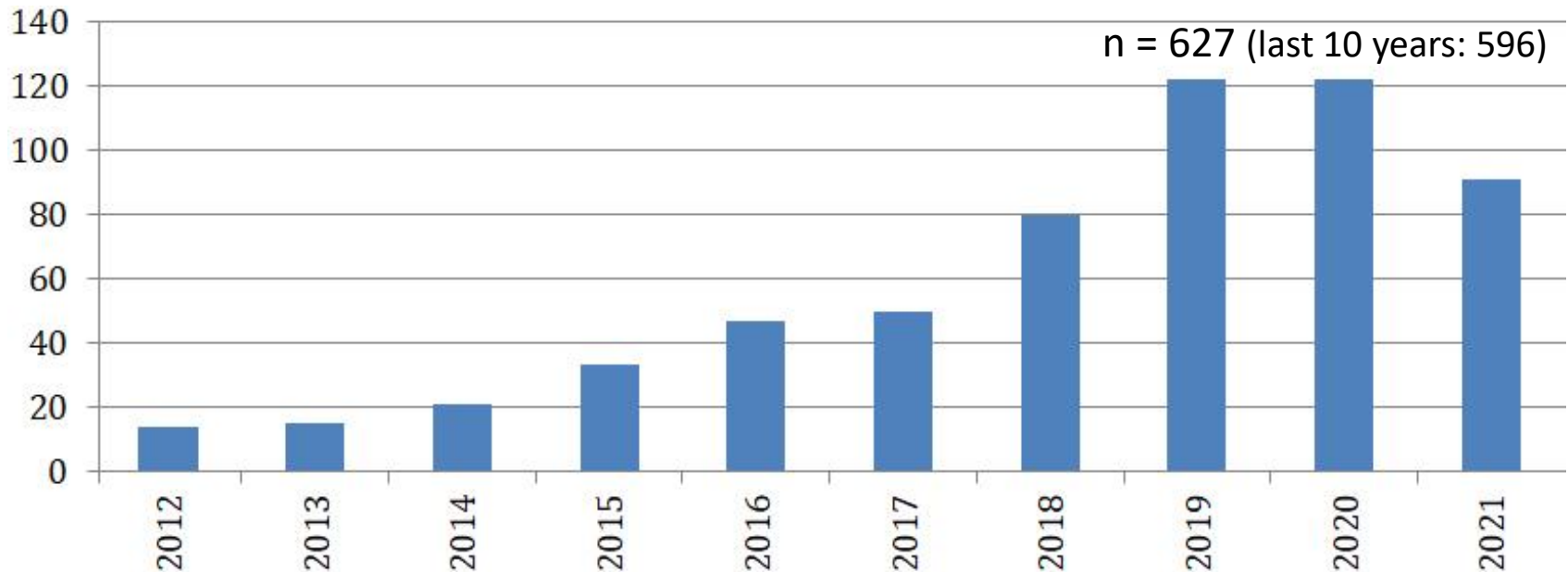
<https://www.dbb-wolf.de/>

— INVESTIGATION IZW

- ❖ Population growing
- ❖ 130 packs / 38 pairs / 9 single territories in 2019/2020
[<https://www.dbb-wolf.de/Wolfsvorkommen/territorien/karte-der-territorien>]
- ❖ Amount of dead wolves is rising
- ❖ IZW: *Post mortem* investigations since 1999 → **627 necropsies**
 - ❖ **Cause** of death
 - ❖ Underlying **infectious diseases**
 - ❖ Collect evidences for **forensic** investigation
 - ❖ Evidences for former **accidents**

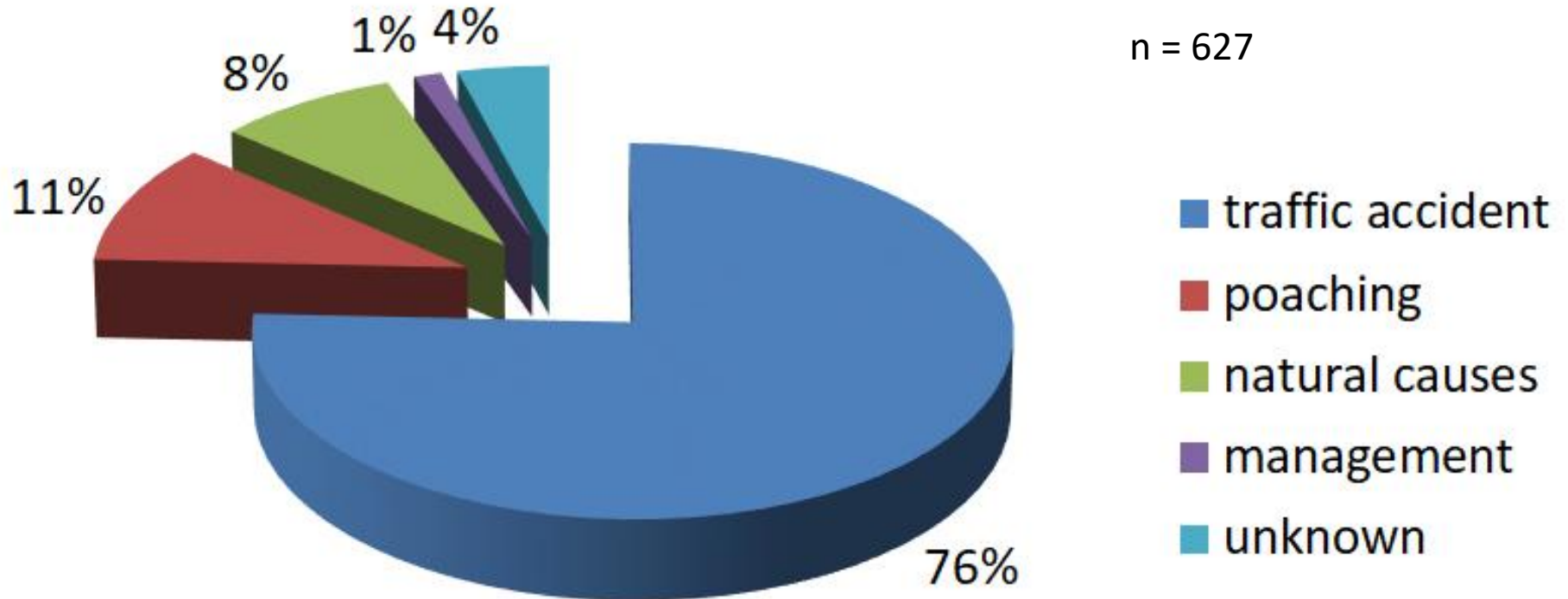
INVESTIGATION IZW

- ❖ Competed tomography
- ❖ ID check
- ❖ Necropsy
- ❖ Further lab work



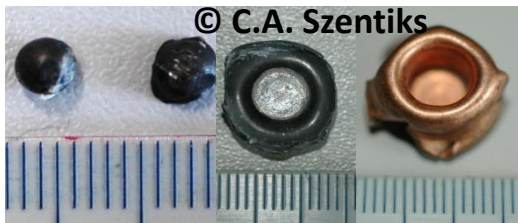
RESULTS IZW

❖ Causes of death

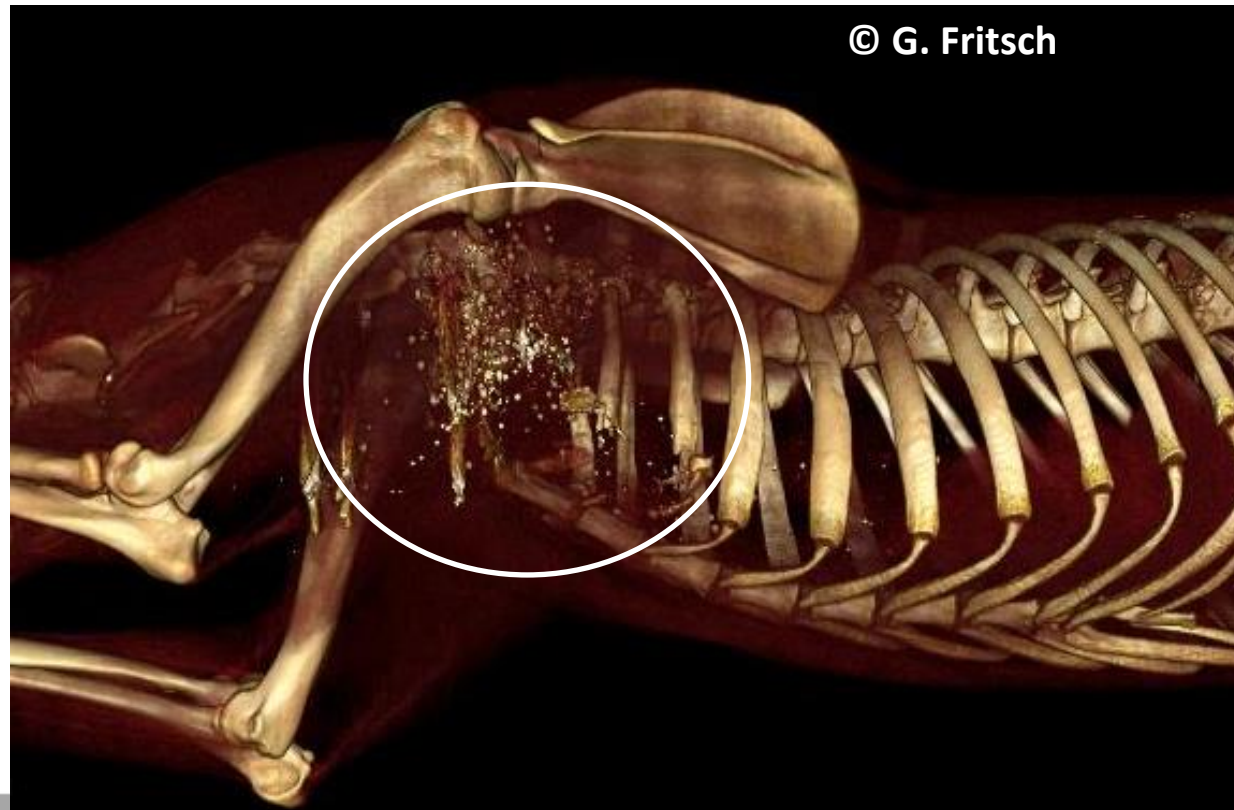


RESULTS IZW

- ❖ 66 poached
 - ❖ 1 chased to death with car
 - ❖ 65 shot

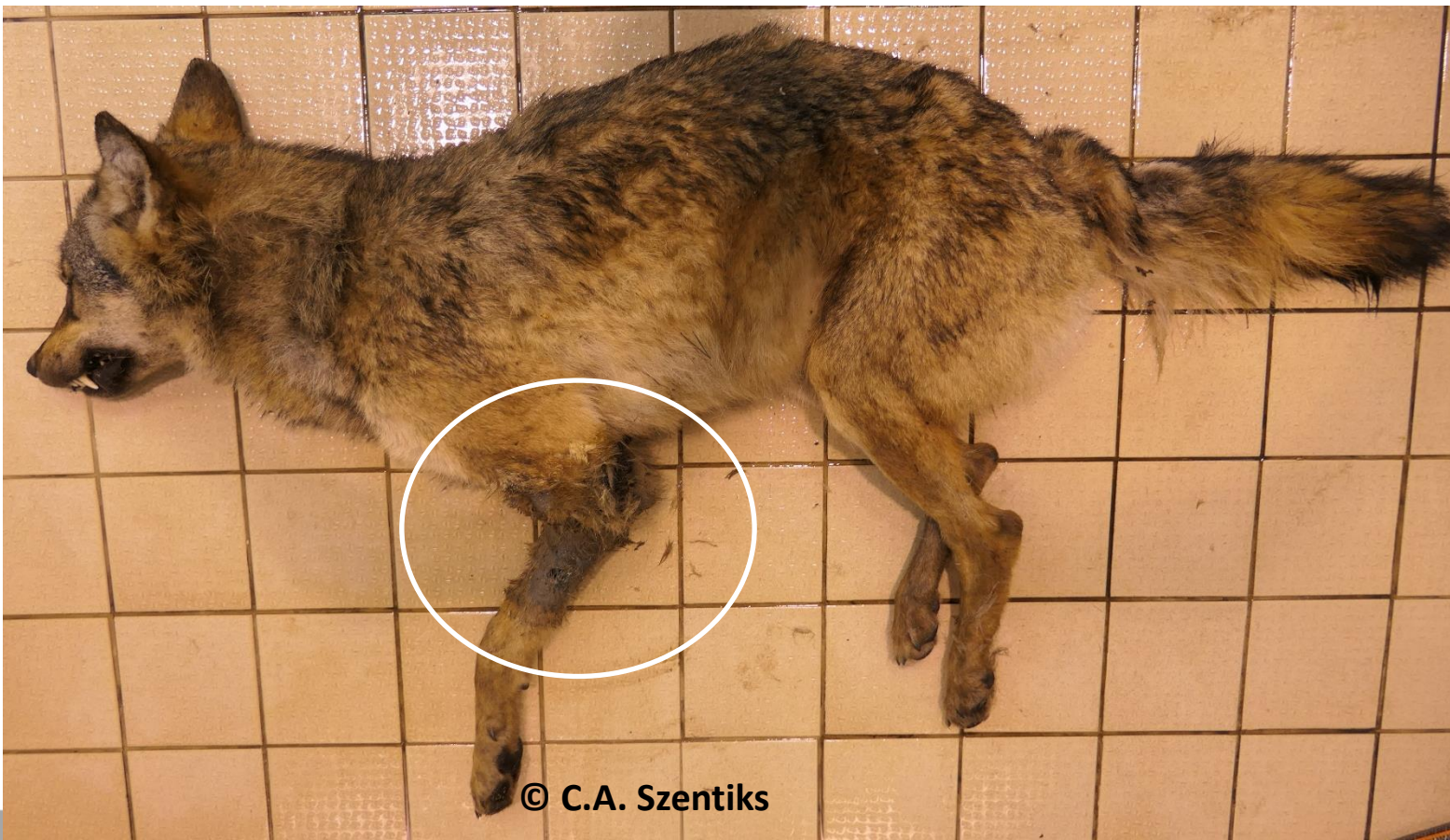


Projectile particles



— RESULTS IZW

- ❖ 66 poached
 - ❖ 1 chased to death with car
 - ❖ 65 shot



— RESULTS IZW

- ❖ 66 poached
 - ❖ 1 chased to death with car
 - ❖ 65 shot



RESULTS IZW

- ❖ 66 poached
 - ❖ 1 chased to death with car
 - ❖ 65 shot



— RESULTS IZW

- ❖ 66 poached
 - ❖ 1 chased to death with car
 - ❖ 65 shot



RESULTS IZW

- ❖ 66 poached
 - ❖ 1 chased to death with car
 - ❖ 65 shot
- ❖ 23 suffered from shots
- ❖ 3 suffered from torture (traps)



© C.A. Szentiks

— RESULTS IZW

- ❖ 66 poached
 - ❖ 1 chased to death with car
 - ❖ 65 shot
- ❖ 23 suffered from shots
- ❖ 3 suffered from torture (traps)

Is it just the tip of the iceberg?

— RESULTS IZW

- ❖ So far no cases of poisoning in wolves detected
 - ❖ Cases known in lynx
- ❖ Police investigations often difficult
 - ❖ Gap between shooting and dying
 - ❖ Concealment by the poacher

SUMMARY

- ❖ DBBW invented in 2016:
- ❖ Evaluation of wolf presence / data collection: territories, genetic, age, cause of death
- ❖ Advises conservation authorities
- ❖ Guidance on actions
- ❖ Presentation of data to the public
- ❖ 11% of the wolves poached
- ❖ 4% of the wolves tortured

— ACKNOWLEDGEMENT



Federal State Gouvernements

Collaborating laboratories



Marion Biering
Juliane B Kühne
Zoltan Mezö
Layla E Mpinou

Sebastian Collet
Gesa Kluth
Carsten Nowak
Ilka Reinhardt
Markus Ritz

Alex D Greenwood
Thomas B Hildebrandt
Karin Hönig
Heribert Hofer
Nadine Jahn
Stephanie Kramer-Schadt
Oliver Krone
Sven Köhlmann
Kristin Mühldorfer
Sabine Schiller
Christian C Voigt
Gudrun Wibbelt



— ACKNOWLEDGEMENT



Leibniz Institute for Zoo
and Wildlife Research
an the Forschungsbund Berlin e.V.

Member of the
Leibniz
Leibniz Association



Leibniz-Institut für Zoo-
und Wildtierforschung
an der Forschungsbund Berlin e.V.

DBBW | Dokumentations- und
Beratungsstelle des Bundes
zum Thema Wolf

Federal State Gouvernements

THANK YOU FOR YOUR ATTENTION!

